



E&V ID: W-0481BA

SAN ANTONIO

## New-build penthouse in frontline sea location

TOTAL SURFACE

~74 m<sup>2</sup>

NUMBER OF BEDROOMS

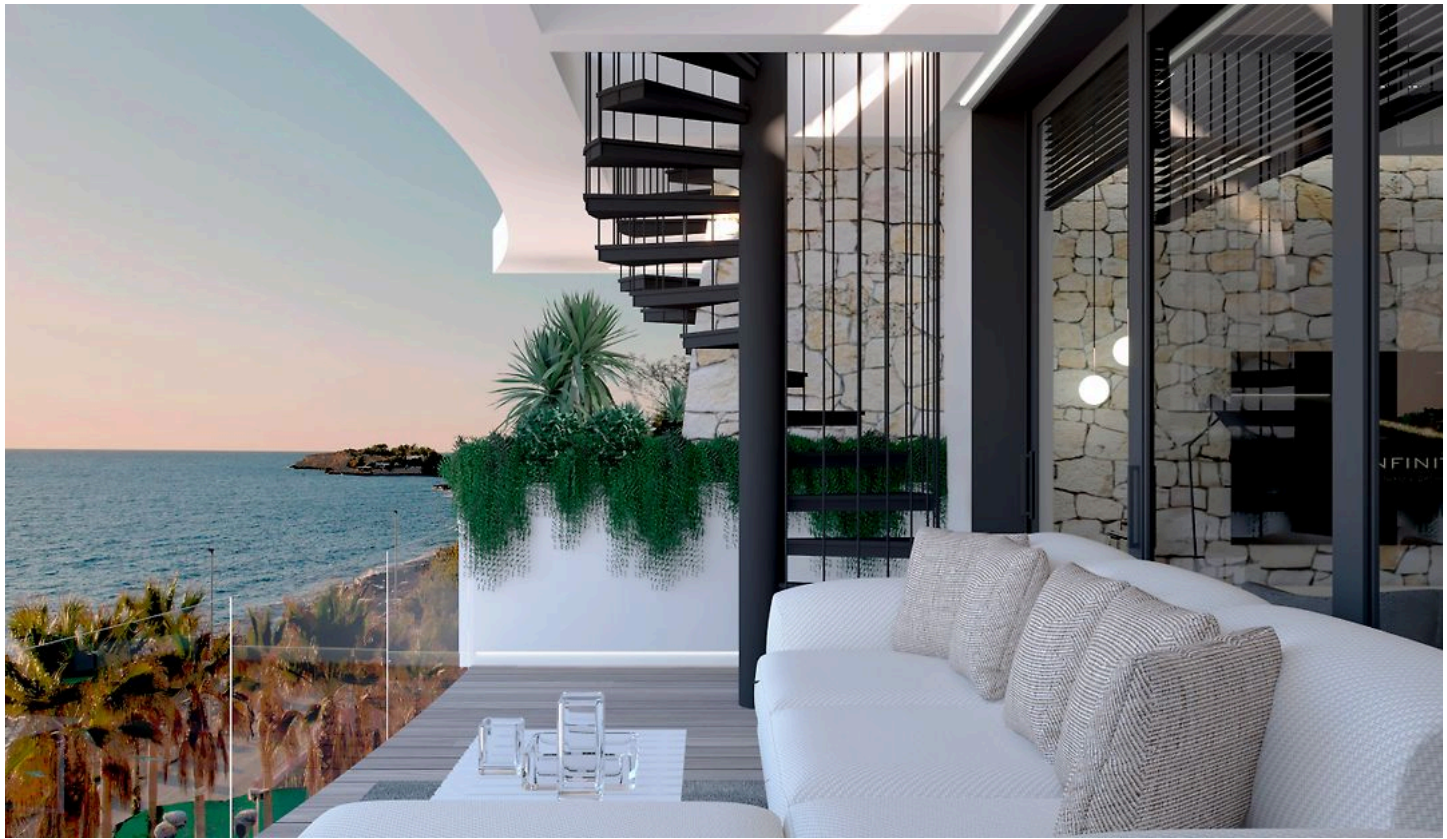
2

TERRACE SIZE

~17 m<sup>2</sup>

ASKING PRICE

€1,380,000



## Property Details

Total Surface	Terrace Size	Number of Bedrooms
~74 m <sup>2</sup>	~17 m <sup>2</sup>	2
Asking price	Total Number of Bathrooms	Rooftop Terrace Size
€1,380,000	2	74 m <sup>2</sup>
Views	Air-Condition	Heating
Beach Front View, Water View	Central Air-conditioned	Electric Heating, Heat Pump (Air-Condition, Radiator)
Energy Efficiency Rating	Year of construction	Price per Parking Bay
B	2026	€30,000
Completion Summer 2026	Communal areas: West-facing swimming pool and garden. Underground garage with parking and storage rooms.	
✓	✓	

## Commission Text

Availability upon agreement.  
 Engel & Völkers does not accept responsibility as the information provided in this brochure is for information only and it is subject to errors, omissions, change of price or withdrawal without notice.

Taxes, notary and registry fees must be paid by purchaser, the commission to E&V paid by the seller as stipulated by Spanish regulations.





## Property Description

This exclusive new development is integrated into a building inspired by traditional Ibizan architecture, ideally located on the sought-after west coast of the island, directly by the seafront promenade and just steps from the crystal-clear waters of the Mediterranean.

The development features a spacious swimming pool surrounded by landscaped communal gardens, creating an exceptional setting to enjoy the Mediterranean lifestyle all year round.

The penthouse stands out for its generous proportions, natural light and seamless connection to the outdoors, offering sea views in complete privacy. The layout includes an open-plan living, dining and kitchen area with direct access to the terrace. The more private area comprises two bedrooms and two bathrooms, ensuring comfort and

tranquillity.

The interior design reflects a contemporary and refined aesthetic, with large-format white stone-effect flooring, natural wood carpentry and expansive windows that maximise light and enhance the indoor-outdoor flow.

Features include energy-efficient lighting and an aerothermal system, ensuring comfort and sustainability. Parking spaces and storage rooms are available at an additional cost.

A penthouse designed for those seeking an exclusive residence in Ibiza, where each day begins with the sea on the horizon and ends with the island's unforgettable Mediterranean sunsets.



## Location Description

Located in the natural harbour of the bay of Sant Antoni de Portmany on Ibiza's west coast, the development enjoys a privileged setting renowned for some of the island's most iconic sunsets.

Just a few steps away are the crystal-clear waters of Cala Gració and Caló des Moro, as well as the seafront promenade leading to the marina, where an attractive selection of restaurants and boutiques can be found.

Ibiza is approximately 15 minutes by car, while Ibiza Airport can be reached in around 25 minutes, ensuring excellent connectivity all year round.

A location that perfectly combines sea, nature, services and comfort in one of the island's most desirable areas.



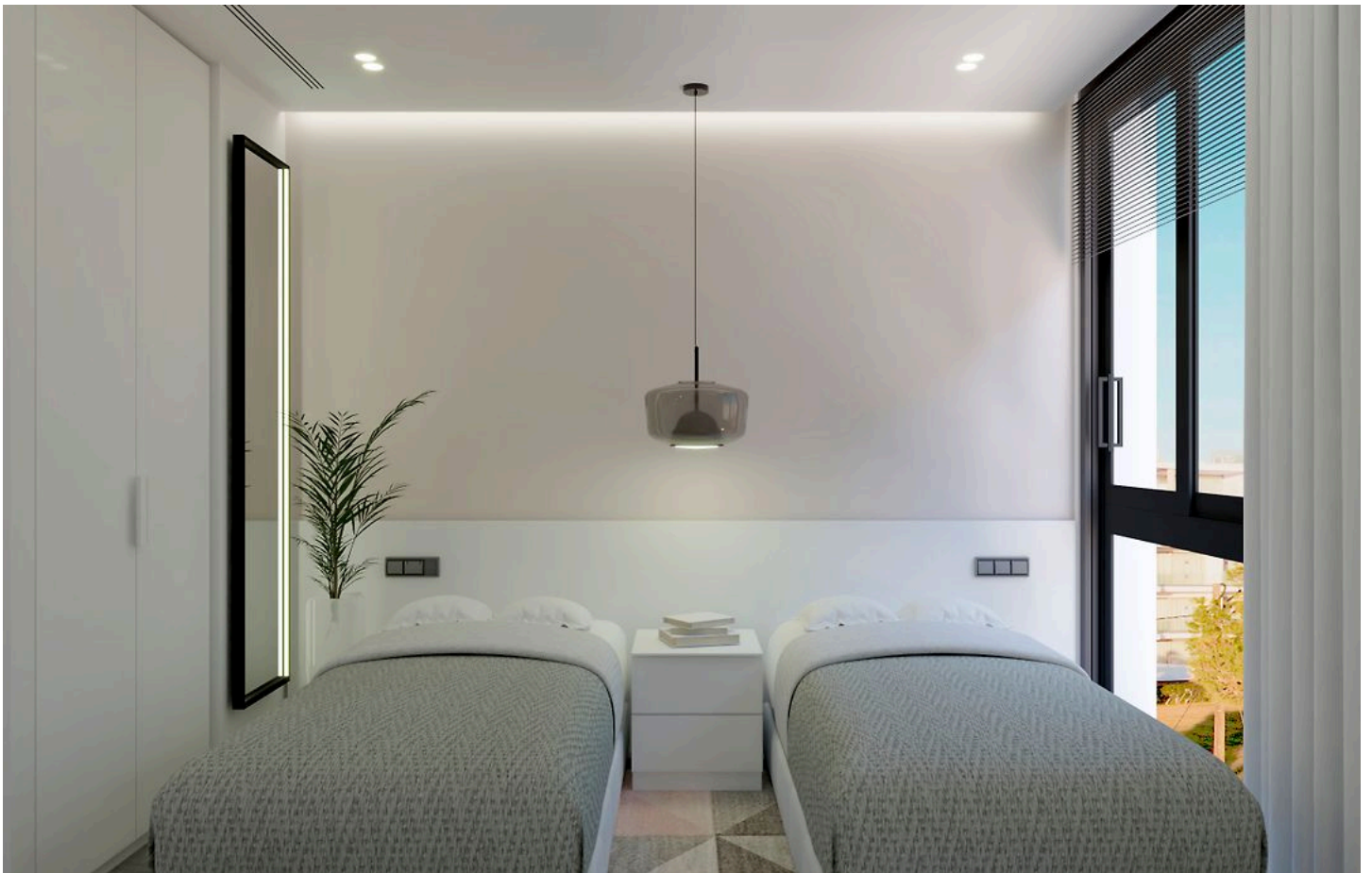




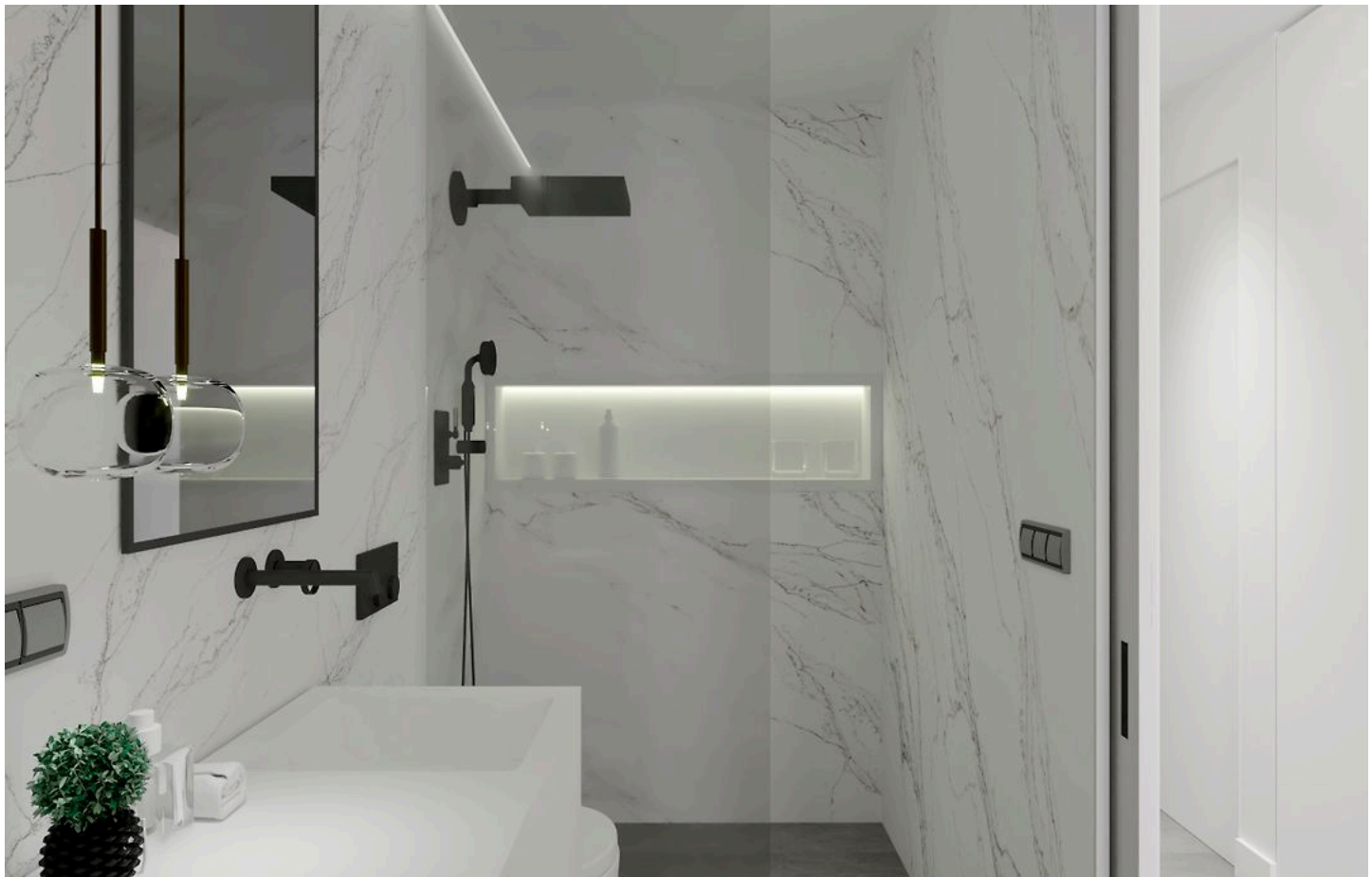




















# Important Notice

In compliance with the current Personal Data Protection Law, we inform you that your personal data were included in an automated file owned by Engel & Völkers Ibiza, S.L., with CIF B57138182 and fiscal address at Avda. Santa Eulalia, 17 bajos, 07800 Ibiza, Spain, to attend to the commitments derived from the relationship between the two parties. Engel & Völkers Ibiza, S.L. informs that all data will be handled lawfully, loyally transparently, appropriately, suitably, with restrictions, precisely and kept up to date. You may exercise your right to access, rectify, limit treatment, suppress, withdraw and oppose to your personal data treatment, as well as the consent provided for its treatment by sending your request by email to [lbiza@engelvoelkers.com](mailto:lbiza@engelvoelkers.com).

